

PMCSS CEILING SENSOR SURFACE C/W REMOTE CONTROL

- ① Base
- ② Decorative Cover
- ③ PIR Motion Sensor

INTRODUCTION

The PMCSS Micro Motion Sensor is a fully automatic indoor controller capable of controlling up to 2000W lighting load / house appliances or 600W fluorescent lighting. Not only is it a lighting controller, but also has the capability of detecting slight motion within a radius of 3m around the sensor. It will keep the connected lighting fixture continuously on even when you are on the phone with slight motion being detected.

It also incorporates lux memory feature which means the sensor is able to record and memorize the lux level when the internal connected lighting fixture is turned on by the Micro Motion Sensor. However, once the natural light lux level is higher than that of the internal artificial light even if the movement still exists, the sensor will switch off the internal lighting fixture thus saving the energy.

Simply taking full advantage of its versatile application, you will enjoy the convenience of its thoughtful design.

Note: Read this manual before install the system.

SAFETY PRECAUTIONS

- Be sure to switch off power source before installing.
- Make sure that the power wiring comes from circuit with an external 16A miniature circuit breaker for the short circuit protection or a suitable fuse.
- The unit is designed to be affixed on the ceiling. (FIGURE 1)

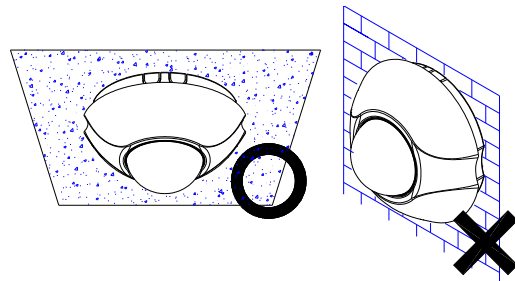


FIGURE 1

- The installation of this device should be made by a qualified electrician.

CHOOSING A MOUNTING LOCATION

- Avoid aiming the motion sensor at heating vents, air conditioners or objects which may change temperature rapidly.
- Prior to mounting, keep in mind that the motion sensor is more sensitive to the motion, which is across the detection field and less sensitive to the motion, which moves directly towards the detector. (FIGURE 2)

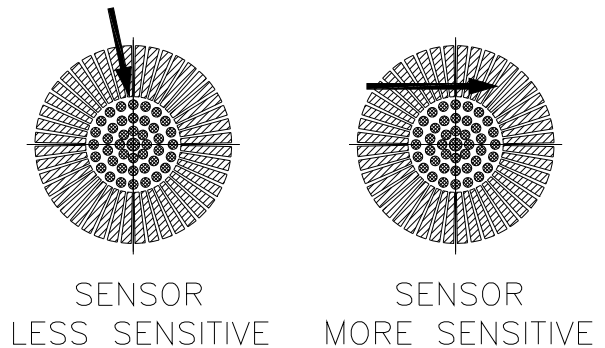


FIGURE 2

Note: Micro motion detection can be made within a radius of 3m around the sensor; regular motion detection can be made within a radius of 8m around the sensor.

INSTALLATION

Install a wall switch adjacent to the power source (FIGURE 3). This helps you isolate the power with ease. See OPERATION section for more information.

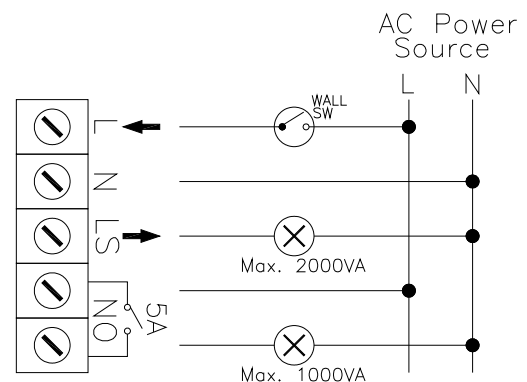


FIGURE 3

WIRING INSTRUCTION

- (1) Switch off the power source or wall switch.
- (2) Push the two curve sides to remove the decorative cover.
- (3) There are two wiring outlets, depending on the actual situation. One is direct from the ceiling and the other is from the remote area. If it is located at the remote area, you should break the two knockout holes, thus enabling the power and lamp wires to go through smoothly. (FIGURE 4)

Note: After breaking the knockout holes, you should take note of its sharp brim around the holes to avoid being hurt.

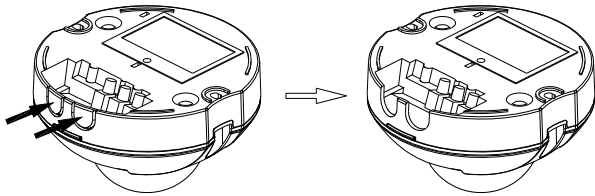


FIGURE 4

- (4) Make use of the base as a template to mark the position of two screw holes on the ceiling.
- (5) Strip approximately 6-8mm of the insulating part of the wires from the power cord.
- (6) The Micro Motion Sensor is equipped with two outputs with different main functions: (FIGURE 5)

Output 1: Lighting/house appliance

The output is used to control lighting/house appliance of which maximum power consumption is lower than 2000W.

Output 2: Dry contact

The output is used to control lighting/house appliance of which maximum power consumption is lower than 5A.

Note: The function of dry contact is not controlled by the IR Remote Control and LUX adjustment. However, it is restricted by the Time adjustment. In short, it is able to activate the connected lightings/house appliances for 24 hour operation with a maximum of 15 minutes for each activation.

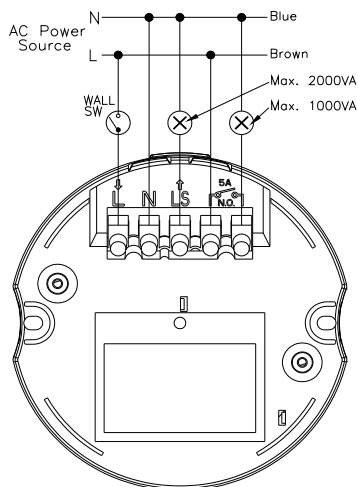


FIGURE 5

- (7) Drill the ceiling wall and screw the base to the wall using suitable plastic wall plugs and screws provided.(FIGURE 6)

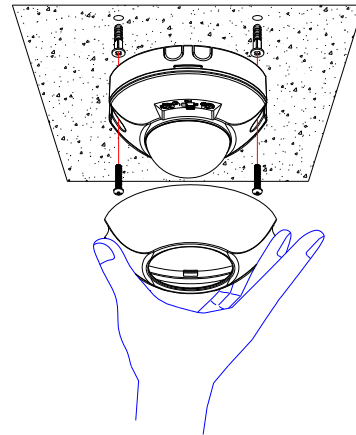


FIGURE 6

SETTING THE LIGHTING SYSTEM

Please test the motion sensor function before testing the IR Remote Control.

Test Mode :

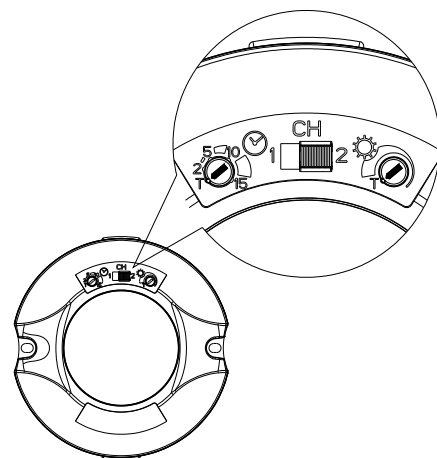
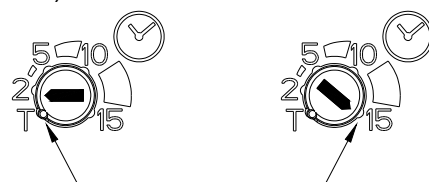


FIGURE 7

- Turn the LUX control and the TIME control to the edge – the *TEST* position. (FIGURE 7)
- Turn on the wall switch. The light will turn on for about two minutes to warm up. Then it turns off.
- Walk through the detection area.

(1) TIME ADJUSTMENT

The TIME adjustment controls how long the light will stay on after the motion has been detected. Time setting is adjustable from 2 minutes to 15 minutes. For easy operation, the indication of four time selection - 2, 5, 10, 15 minute is shown adjacent to the knob. They are regarded as a rough time indication. (FIGURE 8)



ABOUT 2 MINUTES ABOUT 15 MINUTES
FIGURE 8

Note: T serves as a short-time impulse, which allows you to control automatic switching of staircase lighting or timer.

(2) LUX ADJUSTMENT

The LUX adjustment determines at what light level the lighting system will start operating when you set the sensor to automatic operation.

Note: Suitable for lighting fixture connection only.

Provisionally turn the LUX control knob clockwise to the edge at the moon (dusk) position (FIGURE 9). Turn the LUX control knob slowly in reverse until the light comes on. In this provisional setting mode, the motion sensor remains inactive during daylight. At dusk when you find it is the LUX level desired for operation, simply set the LUX control knob to the position which becomes active as daylight declines. The light turns on when you move and turns off when you stop. Wait for the light to turn off before moving again to test the sensor.

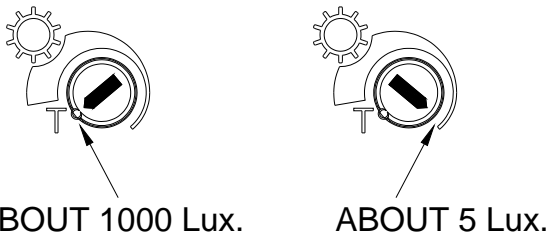


FIGURE 9

(3) CHANNEL SELECTION

Select channel 1 or 2 on the sensor for grouping the connected lighting fixtures in the same or different zone.

E253R IR Remote Control

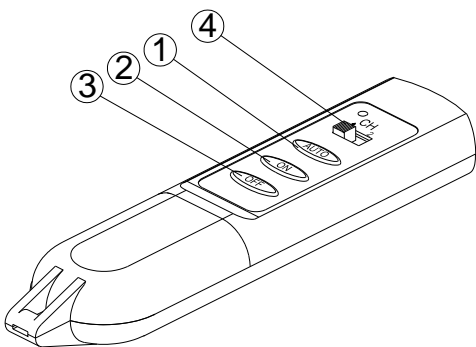


FIGURE 10

3-button and channel selection slide switch are shown on the front cabinet as follows: (FIGURE 10)

- ① AUTO
- ② ON
- ③ OFF
- ④ CHANNEL SWITCH

LOADING THE BATTERY

- (1) By using a flat blade screwdriver to detach the battery cover from the cabinet. (FIGURE 11)

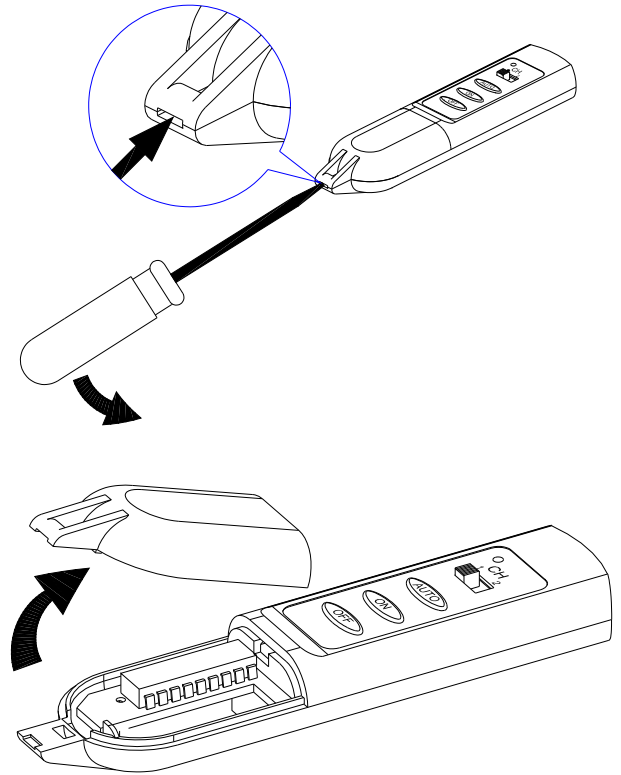


FIGURE 11

- (2) Insert a 12V Alkaline battery to the battery compartment and refit the battery cover. (FIGURE 12)

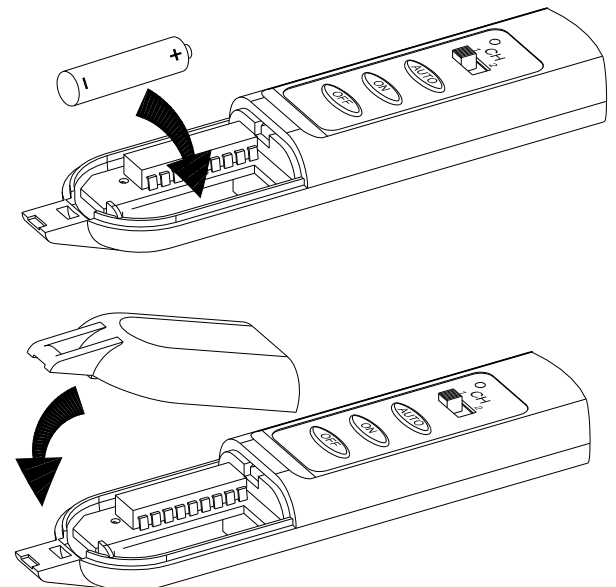


FIGURE 12

OPERATION

By using IR Remote Control to your PMCSS, you can easily select three modes of operation: *automatic*, *on* and *off*.

Make sure the Micro Motion Sensor and IR Remote Control are set at the same channel. (FIGURE 13a & 13b)

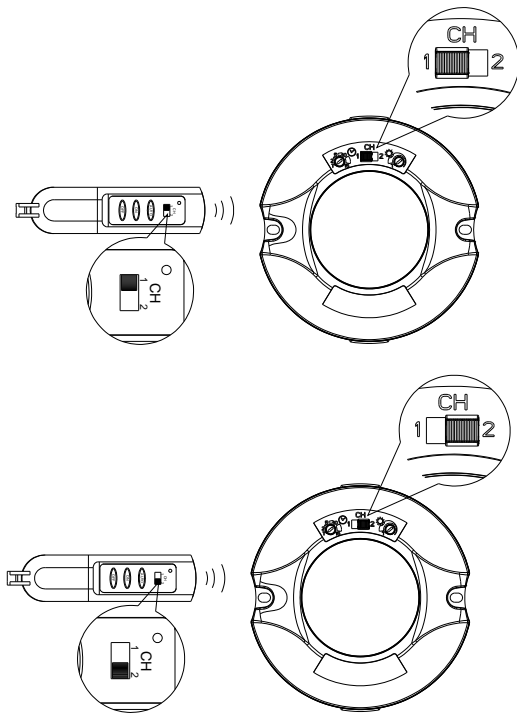


FIGURE 13a & 13b

(1) AUTOMATIC OPERATION

Before operating the IR Remote Control, please make sure the sensor is in proper setting for Auto mode.

The sensor detects motion automatically according to its time and lux setting.

The LED inside the sensor will lite up when receiving IR Remote Control signal.

(2) ON

To keep the light on regardless of motion, you can press "On" button on the IR Remote Control. The light will be continuously on.

(3) OFF

By pressing "Off" button to deactivate the light from operating.

User can also set the motion sensor back to Auto operation by pressing "Auto" button.

SPECIFICATIONS	
Power Requirement	AC 220 ~ 240V / 50Hz
Operating Load	Output 1 : AC 230V / 50Hz, 2000W or 600W fluorescent Output 2 : Dry contact capacity; 5A, 230VAC / 30VDC
Detection Angle	Up to 360° at 20°C
Detection Range (Micro Movement)	3~4m radius at 20°C
Detection Range (Regular Movement)	6~8m radius at 20°C
Mounting Height	Recommended 2.5m Ceiling Mount
IR Controller	Channel 1 & 2 Auto / On / Off
Wall switch control	ON/OFF
Time Adjustment	Adjustable 2 minutes ~ 15 minutes
Lux Adjustment	Yes
Lux Memory	Yes
Warm Up Time	About 2 min.
Protection Class	II
Safety	CE, GS

A501110008R

Warning:

Do not dispose of electrical appliances as unsorted municipal waste, use separate collection facilities.

Contact your local government for information regarding the collection systems available.

If electrical appliances are disposed of in landfills or dumps, hazardous substances can leak into the groundwater and get into the food chain, damaging your health and well-being.

E-Matic Energy Management Solutions,
4 Arkwright Court, Fylde Industrial Estate,
Blackpool, Lancashire, FY4 5DR.
Tel: 01253 791888, Fax: 01253 791887,
Web site: www.challenger.co.uk,
Email: sales.challenger@adivision.co.uk

