

96.74 mm

71.17 mm



**INSTALLATION INSTRUCTION**

**ELEDS6, ELEDS8, ELEDS12**

Ematic\_ELEDS6-8-12\_Instructions\_Rev02

Ematic\_ELEDS6-8-12\_Instructions\_Rev02

**Specification:**

Model	Input Voltage	Watt	Power Factor	Lumen output	Beam Angle	Color Temperature	CRI (Ra)	Input Current	Dimensions (mm)	Cut out Dimensions
ELEDS6	200-240V AC	12W	> 0.9	900-1020lm	120°	3000K	> 80	300mA	Φ168*6.5	150 mm
						4000K				
						6000K				
ELEDS8	200-240V AC	15W	> 0.9	1125-1275lm	120°	3000K	> 80	350mA	Φ217*6.5	195 mm
						4000K				
						6000K				
ELEDS12	200-240V AC	25W	> 0.9	2125-2375lm	120°	3000K	> 80	620mA	Φ310*6.5	290 mm
						4000K				
						6000K				

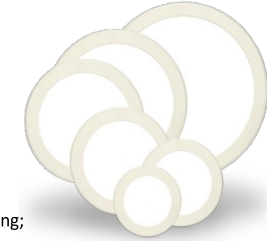
**Fixture Compatibility:**

Rated Wattage	Ingress Protection	Operating Temp	Operating Humidity	Storage Temp
12W	IP20	-20 °C – 45 °C	0 - 90 %	-20 °C – 65 °C
15W	IP20	-20 °C – 45 °C	0 - 90 %	-20 °C – 65 °C
25W	IP20	-20 °C – 45 °C	0 - 90 %	-20 °C – 65 °C

Ematic\_ELEDS6-8-12\_Instructions\_Rev02

**Packaging Information:**

Model	Net weight including driver
ELEDS6	0.3 KG
ELEDS8	0.45 KG
ELEDS12	0.86 KG



**1. Introduction**

- ◆ Super bright LED chips; Aluminum die-casting;
- ◆ Low maintenance and high efficiency; Save 50% electrician labor cost;
- ◆ Surface mounted and Recessed;

**2. Installation**

**Warning:**

- Electrical power is OFF before and during installation and maintenance.

Ematic\_ELEDS6-8-12\_Instructions\_Rev02

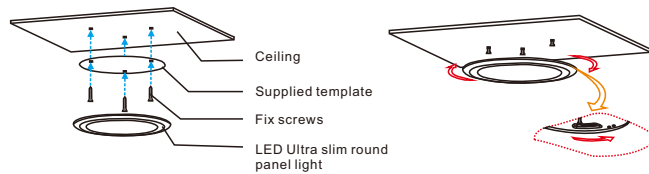
Ematic\_ELEDS6-8-12\_Instructions\_Rev02

**Warning:**

- Make sure the supply voltage is the same as the rated luminaire voltage.
- Do not operate in ambient temperatures above those indicated on the luminaire nameplate.

Installation Steps: Refer to the following diagram when you install the fixture.

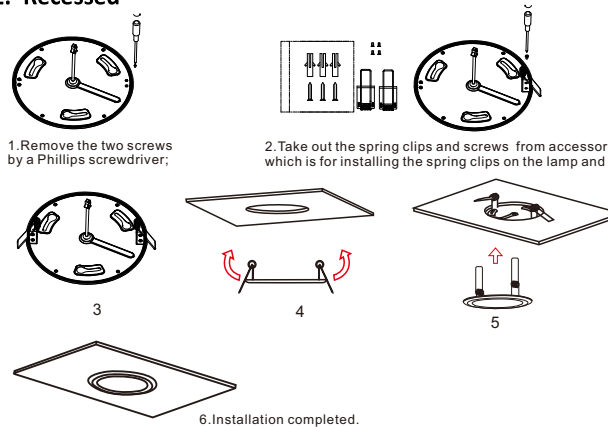
**1. Surface mounted**



Ematic\_ELEDS6-8-12\_Instructions\_Rev02

3

**2. Recessed**



Ematic\_ELEDS6-8-12\_Instructions\_Rev02

4

**After installation**

- > Check whether the lighting fixture is firmly fixed.
- > Check whether wires are connected correctly.
- > Turn on the power, and check if the lighting fixture works well. If not, please turn off the power and contact.

Due to our policy of continuous improvement we reserve the right to change specification without prior notice. Errors and omissions excepted. These instructions have been carefully checked prior to publication. However, no responsibility can be accepted by Ematic for any misinterpretation of these instructions.

**E-matic Energy Management Solutions**  
 10 Sandersons Way, Marton, Blackpool, FY4 4NB  
 Tel: 01253791888 Fax: 01253791887  
 Email: enquiries.ematic@adivision.co.uk  
 Web: www.e-matic.co.uk



Ematic\_ELEDS6-8-12\_Instructions\_Rev02

5